

**RAFIC HARIRI INTL BEIRUT
STANDARD ARRIVAL ROUTES – INSTRUMENT (STAR) RWY 17**

General instructions.

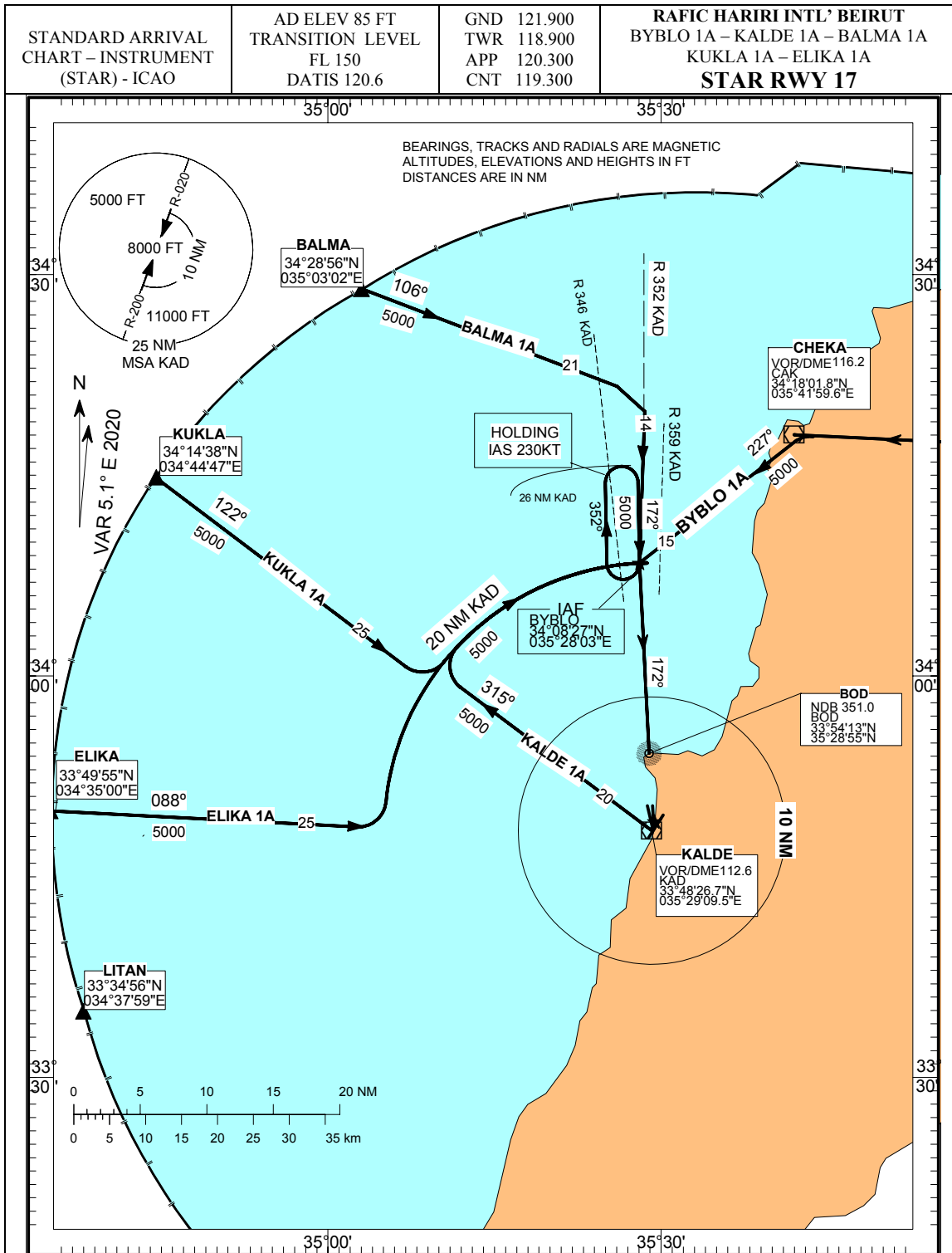
Pilots may be requested by adjacent centers to establish two way radio communication with “Beirut Control” on 119.300 or “Beirut Approach” on 120.300 MHZ before entering BEIRUT FIR.

Notes :

1. ATC may deviate from any STAR subject to traffic situation.
2. Pilots unable to comply with the allocated STAR shall inform ATC well before 30 NM DME from Beirut.
3. Any malfunction of Airborne ground equipment relating to ILS/DME or KAD VOR/DME, must be reported immediately to ATC, together with any decision to perform a missed approach procedure if visual contact is not established

DESIGNATOR	ROUTING	ALTITUDE RESTRICTION
BYBLO 1A BYBLO ONE ALPHA Arrival	Arriving from LEBOR to CAK leave CAK/VOR R227 to (IAF) BYBLO. Then see Instrument Approach Chart RWY 17	Cross LEBOR at or above FL 240 CEDAR at or above 13000ft CAK at or above 10000ft BYBLO at or above 5000ft
KALDE 1A KALDE ONE ALPHA Arrival	Arriving from any direction to overhead KAD, leave KAD radial 315 (315° MAG) to intercept DME ARC 20 NM KAD, to BYBLO. Then see instrument Approach Chart RWY 17.	Sector altitude to overhead KAD Descent along radial 315° 5000ft
BALMA 1A BALMA ONE ALPHA Arrival	From BALMA follow R286° CAK (106° MAG) then follow R352 (172° MAG) KAD until IAF BYBLO. Then see instrument approach chart RWY 17.	Minimum altitude 5000 ft
KUKLA 1A KUKLA ONE ALPHA Arrival	From KUKLA follow R302° KAD (122° MAG) then follow DME ARC 20 NM KAD until IAF BYBLO. Then see instrument approach chart RWY 17.	Minimum altitude 5000 ft
ELIKA 1A ELIKA ONE ALPHA Arrival	From ELIKA follow R268° KAD (088° MAG) then follow DME ARC 20 NM KAD until IAF BYBLO. Then see instrument approach chart RWY 17.	Minimum altitude 5000 ft

Missed approach procedure; See instrument approach chart ILS or VOR/DME RWY 17.



INT. LEFT BLANK