

**RAFIC HARIRI INTL BEIRUT
STANDARD ARRIVAL ROUTES – INSTRUMENT (STAR) RWY 16**

General instructions.

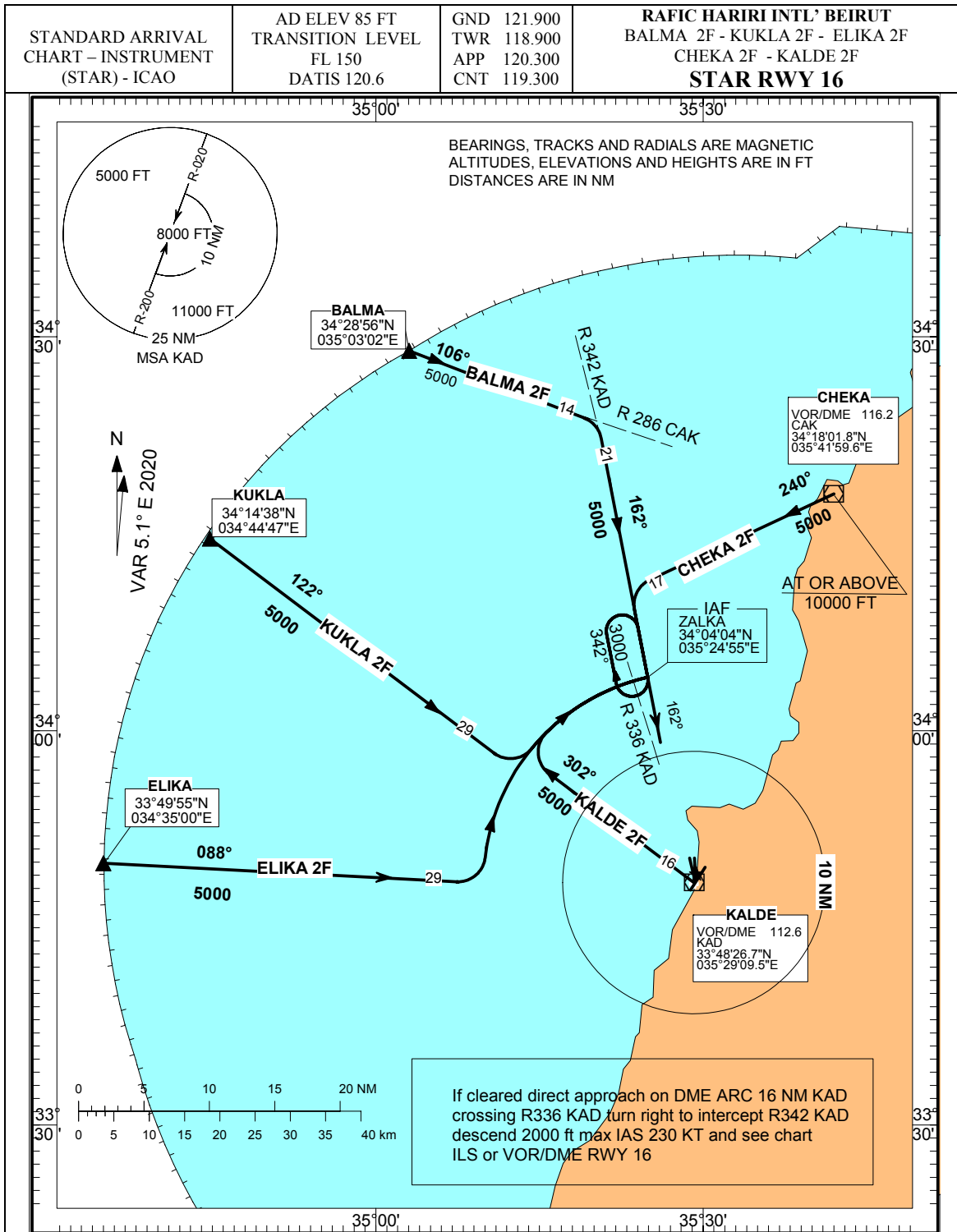
Pilots may be requested by adjacent centers to establish two way radio communication with “Beirut Control” on 119.300 or “Beirut Approach” on 120.300 MHZ before entering BEIRUT FIR.

Notes :

1. ATC may deviate from any STAR subject to traffic situation.
2. Pilots unable to comply with the allocated STAR shall inform ATC well before 30 NM DME from Beirut.
3. Any malfunction of Airborne ground equipment relating to ILS, DME or KAD VOR/DME, must be reported immediately to ATC, together with any decision to perform a missed approach procedure if visual contact is not established.

DESIGNATOR	ROUTE	CLIMB INSTRUCTION
BALMA 2F BALMA two FOXTROT Arrival	From BALMA follow CAK R286 (106° MAG), then follow KAD R342 (162 MAG) until IAF ZALKA. Then see instrument approach chart ILS or VOR/DME 16	Minimum altitude 5000 FT
KUKLA 2F KUKLA TWO FOXTROT Arrival	From KUKLA follow KAD R302 (122° MAG), then follow DME ARC 16 NM KAD (*) until IAF ZALKA. Then see instrument approach chart ILS or VOR/DME 16	Minimum altitude 5000 FT
ELIKA 2F ELIKA TWO FOXTROT Arrival	From ELIKA follow KAD R268 (088° MAG), then follow DME ARC 16 NM KAD until IAF ZALKA Then see instrument approach chart ILS or VOR/DME 16	Minimum altitude 5000 FT
CHEKA 2F CHEKA TWO FOXTROT Arrival	Arriving from LEBOR to CAK leave CAK R240 (240° MAG), then follow KAD R342 (162° MAG) until IAF ZALKA Then see instrument approach chart ILS or VOR/DME 16	Cross LEBOR at or above FL 240 CEDAR at or above 13000ft CAK at or above 10000ft ZALKA at or above 5000ft
KALDE 2F KALDE TWO FOXTROT Arrival	From KAD follow KAD R302 (302° MAG), then follow DME ARC 16 NM KAD (*) until IAF ZALKA. Then see instrument approach chart ILS or VOR/DME 16	Sector Altitude to overhead KAD altitude 5000 FT
For All STARS	* If cleared direct approach : on DME ARC 16 NM crossing KAD R336 (337 VOR/DME procedure), turn right 162° to intercept KAD R342 (342 VOR/DME procedure), descend to 2000 FT, max IAS 230 KT and see instrument approach chart ILS or VOR/DME 16)	

Missed approach procedure; See instrument approach chart ILS or VOR/DME RWY 16



INT. LEFT BLANK