

**RAFIC HARIRI INTL BEIRUT**  
**STANDARD DEPARTURES ROUTES - INSTRUMENT (SID) RWY 34 OR (35)**

General instructions.

Air traffic gradient 5 % minimum

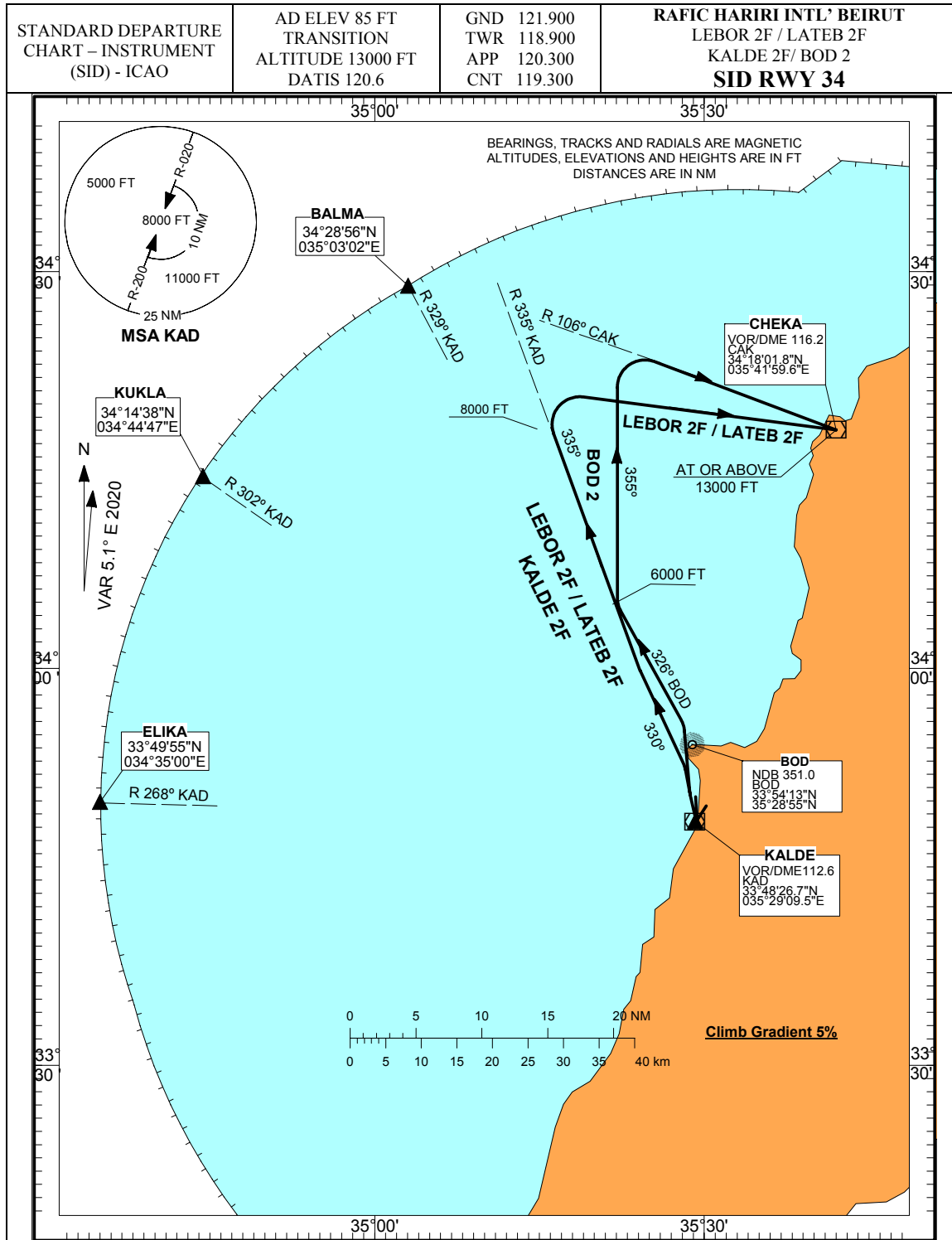
If Aircraft unable to Comply with these SIDs, pilots must advise ATC from start-up request

Noise abatement:

All take-offs must comply with the configuration and the climb rating in accordance with noise reduction depending on the current operational conditions.

The routes are established for noise abatement reasons. Strict adherence within the limits of aircraft performance is mandatory.

<b>DESIGNATOR</b>	<b>ROUTE</b>	<b>CLIMB INSTRUCTION</b>
LEBOR 2F  LEBOR TWO FOXTROT DEPARTURE	From the DER climb MAG track 330° to intercept and follow KAD R335°. At 8000 FT turn right to CAK. After CAK proceed to LEBOR.	Climb Gradient 5 %. Cross CAK at or above 13000FT. Cross LEBOR at or above FL240
LATEB 2F  LATEB two FOXTROT DEPARTURE	From the DER climb MAG track 330° to intercept and follow KAD R335°. At 8000 FT turn right to CAK. After CAK proceed to LATEB.	Climb Gradient 5 % Cross CAK at or above 13000FT. Cross LATEB at or above FL290
BOD 2 BOD TWO DEPARTURE	After take-off intercept 326° bearing from BOD NDB (351 KHZ), at 6000 feet turn RIGHT heading 355°, intercept airway R655 to CAK DVOR/DME (116.2MHZ) then to LEBOR or LATEB	Climb gradient 5% CAK at or above 13000 ft LEBOR at or above FL240 LATEB at or above FL290 or as cleared by ATC
DEPARTURE TO THE WEST: KALDE 2F	From the DER climb MAG track 330° to intercept and follow KAD R335°. And then join the proper airway as cleared by ATC.	Climb Gradient 5 %.



**INT. LEFT BLANK**