

**RAFIC HARIRI INTL BEIRUT
STANDARD ARRIVAL ROUTES – INSTRUMENT (STAR) RWY 03**

General instructions.

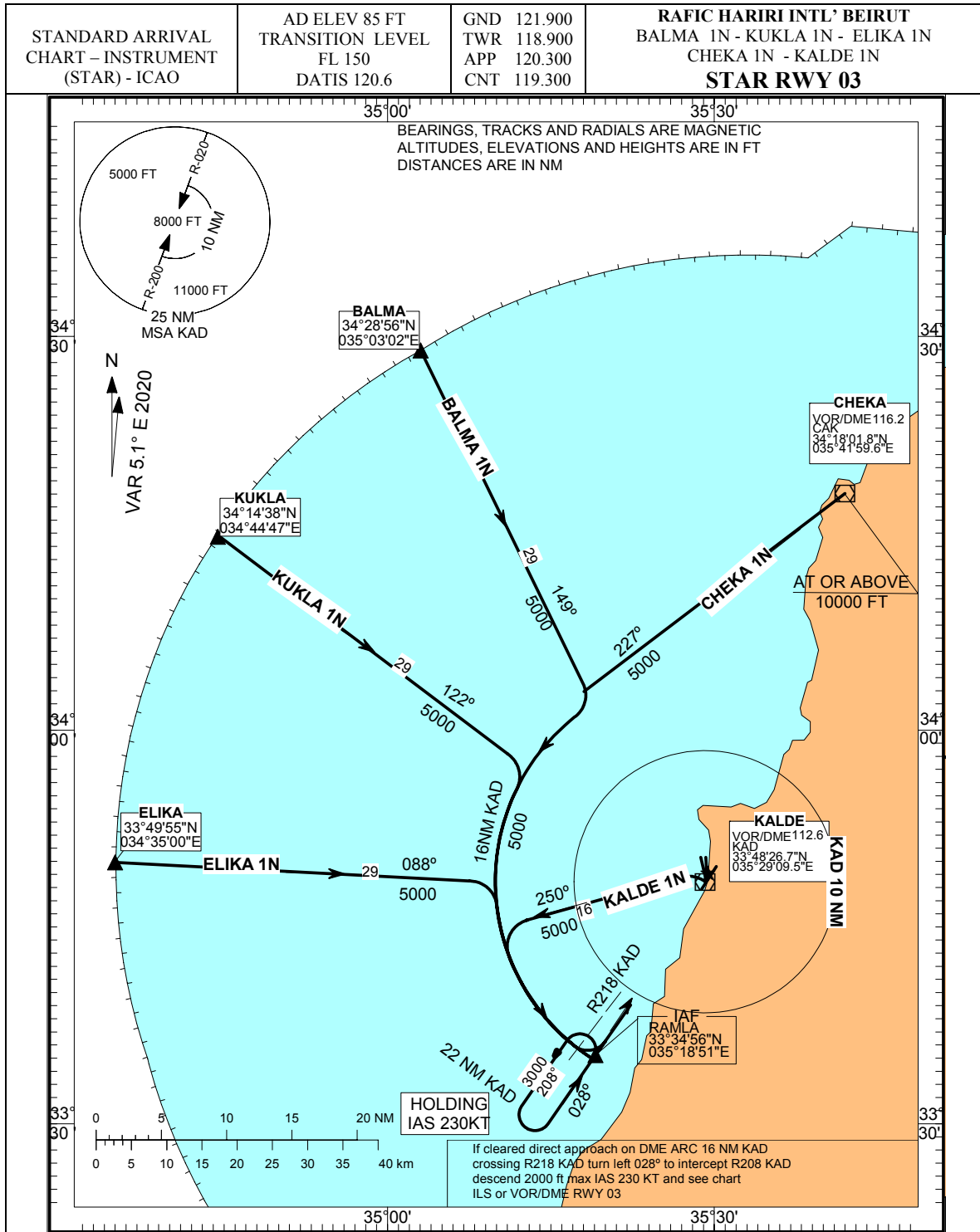
Pilots may be requested by adjacent centers to establish two way radio communication with “Beirut Control” on 119.300 or “Beirut Approach” on 120.300 MHZ before entering BEIRUT FIR.

Notes :

1. ATC may deviate from any STAR subject to traffic situation.
2. Pilots unable to comply with the allocated STAR shall inform ATC well before 30 NM DME from Beirut.
3. Any malfunction of Airborne ground equipment relating to ILS/DME or KAD VOR/DME, must be reported immediately to ATC, together with any decision to perform a missed approach procedure if visual contact is not established

DESIGNATOR	ROUTE DESCRIPTION	ALTITUDE RESTRICTION
BALMA 1N BALMA ONE NOVEMBER Arrival	From BALMA follow KAD R329 (149° MAG), then follow DME ARC 16 NM KAD (*) until IAF RAMLA. Then see instrument approach chart ILS or VOR/DME 03	Minimum altitude 5000 FT
KUKLA 1N KUKLA ONE NOVEMBER Arrival	From KUKLA follow KAD R302 (122° MAG), then follow DME ARC 16 NM KAD (*) until IAF RAMLA. Then see instrument approach chart ILS or VOR/DME 03	Minimum altitude 5000 FT
ELIKA 1N ELIKA ONE NOVEMBER Arrival	From ELIKA follow KAD R268 (088° MAG), then follow DME ARC 16 NM KAD until IAF RAMLA. Then see instrument approach chart ILS or VOR/DME 03	Minimum altitude 5000 FT
CHEKA 1N CHEKA ONE NOVEMBER Arrival	Arriving from LEBOR to CAK leave CAK R227 (227° MAG), then follow DME ARC 16 NM until IAF RAMLA. Then see instrument approach chart ILS or VOR/DME 03	Cross LEBOR at or above FL 240 CEDAR at or above 13000ft CAK at or above 10000ft RAMLA at or above 5000ft
KALDE 1N KALDE ONE NOVEMBER Arrival	From KAD follow KAD R250 (250° MAG), then follow DME ARC 16 NM KAD (*) until IAF RAMLA. Then see instrument approach chart ILS or VOR/DME 03	Sector Altitude to overhead KAD altitude 5000 FT
For All STARS	* If cleared direct approach : on DME ARC 16 NM crossing KAD R218 turn left 028° (028 VOR/DME procedure), to intercept KAD R 208 (208° VOR/DME procedure), descend to 2000 FT, max IAS 230 KT and see instrument approach chart ILS or VOR/DME 03)	

Missed approach procedure ; See instrument approach chart ILS or VOR/DME RWY 03



INT. LEFT BLANK